
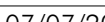
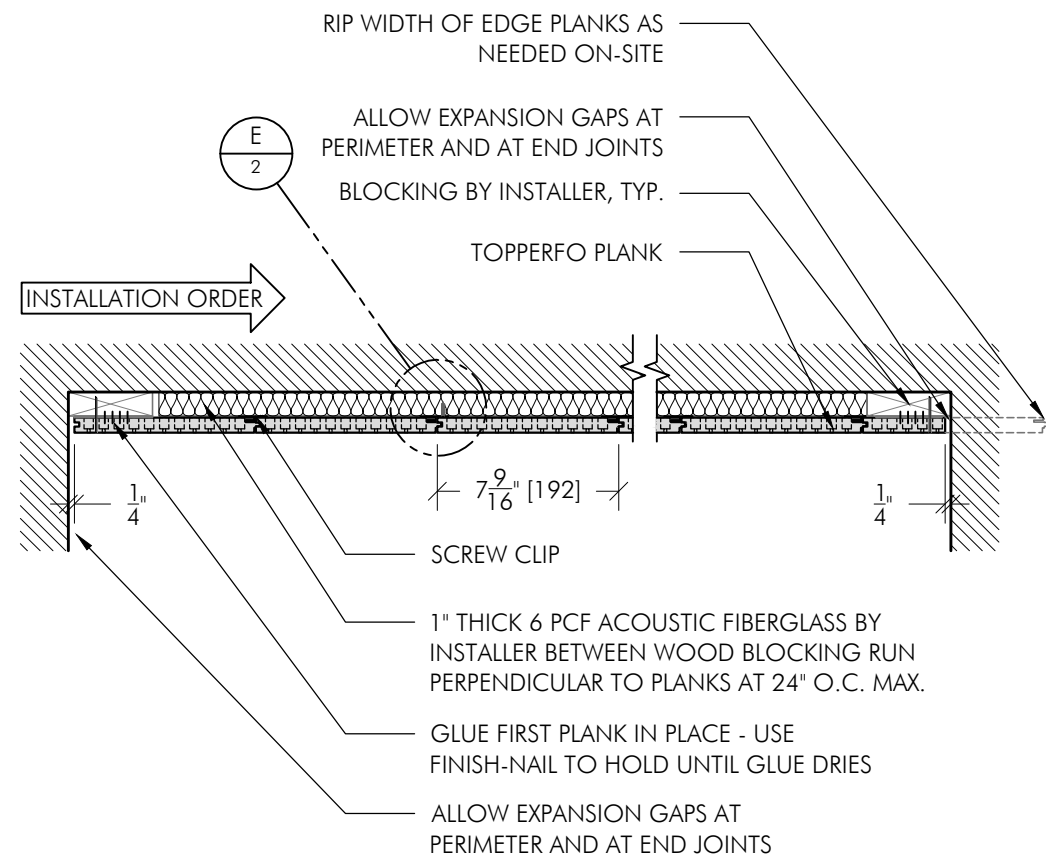


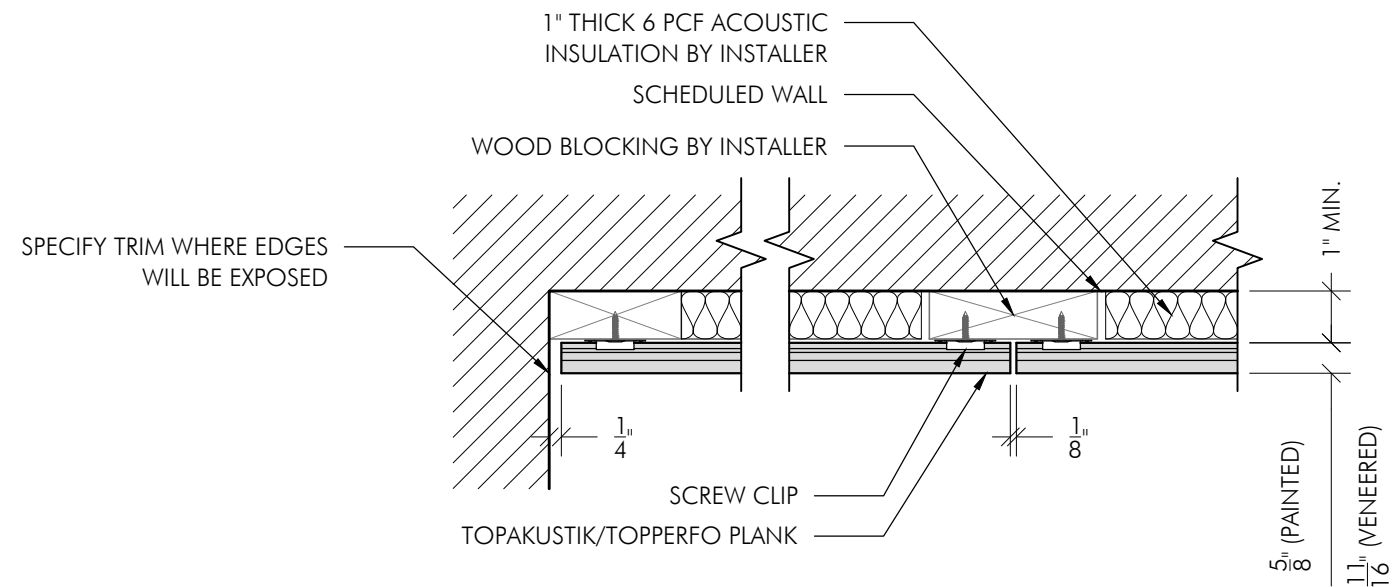
**A** RCP - TOPPERFO PLANKS  
SCALE: 3/4"=1'-0"

TOPPERFO PLANKS	TOP)A)K)U)S)T)I)K) 		SCALE:	NOTED
	(410) 849-4333   www.topakustikusa.com		PAGE:	1/2
			DRAWN BY:	WRM
	SCREW CLIP CEILING 1	Production Tolerance: ± 1/32" PER 36" of product		DATE:
3 <sup>rd</sup> ANG. PROJ				

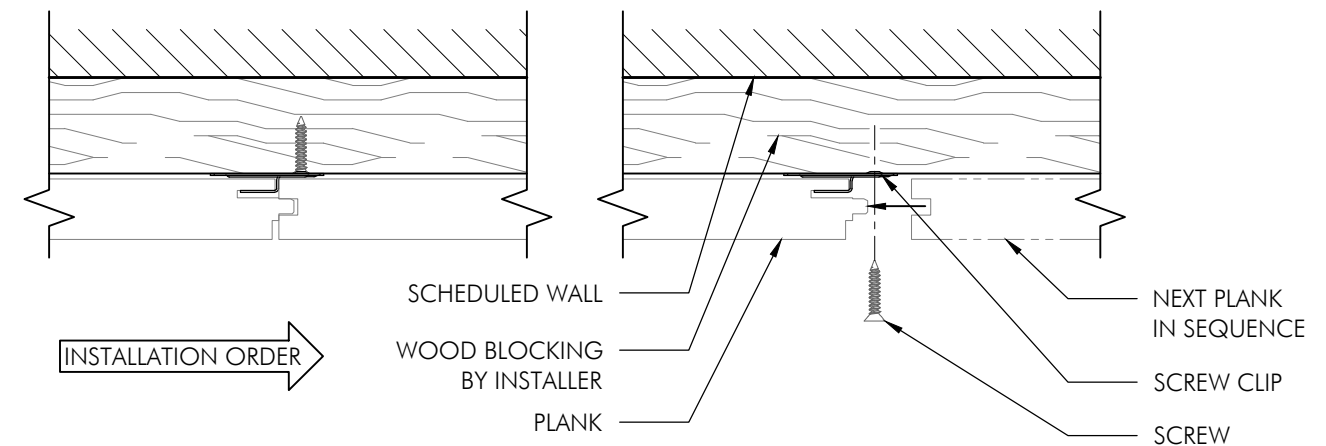
These drawings show typical installation conditions for Topakustik® and Topperfo® products. They do not account for the specific requirements of local building codes, laws, etc. that may be applicable for a particular installation. Topakustik® does not warrant, and assumes no liability for the accuracy or completeness of the drawings for a particular installation or their fitness for a particular purpose. The user is advised to consult with a duly licensed architect or engineer in the particular local of the installation to assure compliance with all legal requirements. Topakustik® is not licensed to provide professional engineering design services.



**C** TRANSVERSE DETAIL  
SCALE: 1 1/2"=1'-0" REF: A/1




**D** LONGITUDINAL DETAIL  
SCALE: 3"=1'-0" REF: A/1



**E** ENLARGED SECTION DETAIL  
SCALE: 6"=1'-0" REF: C/2

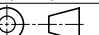
TOPPERFO PLANKS

SCREW CLIP CEILING 2

TOPAKUSTIK 

(410) 849-4333 | www.topakustikusa.com

Production Tolerance: ±1/32" PER 36" of product

SCALE:	NOTED
PAGE:	2/2
DRAWN BY:	WRM
DATE:	07/07/2020
3 <sup>rd</sup> ANG. PROJ.	

These drawings show typical installation conditions for Topakustik® and Topperfo® products. They do not account for the specific requirements of local building codes, laws, etc. that may be applicable for a particular installation. Topakustik® does not warrant, and assumes no liability for the accuracy or completeness of the drawings for a particular installation or their fitness for a particular purpose. The user is advised to consult with a duly licensed architect or engineer in the particular local of the installation to assure compliance with all legal requirements. Topakustik® is not licensed to provide professional engineering design services.