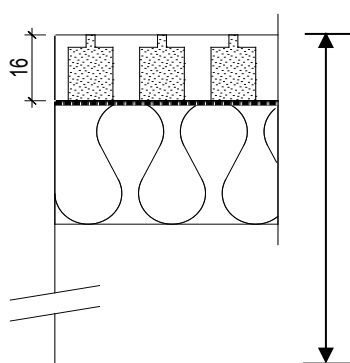


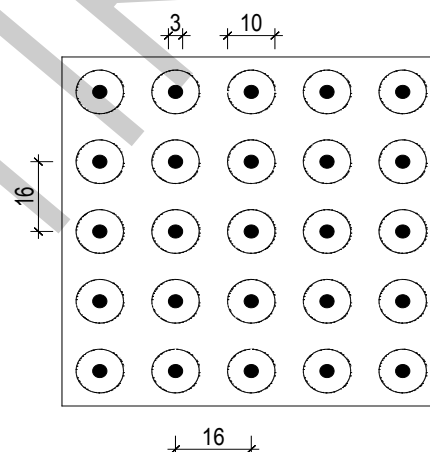
Acoustical Absorption Coefficient according to ISO 354

Object: TOPPERFO® wall- and ceiling panelling  
Type TOPPERFO® T 16/16/10-3

Research: Laboratory: SWISSCOM AG 31.05.2007 / 01.06.2007  
 Test area: 12 m<sup>2</sup> Relative atmospheric humidity: 52.2%  
 Echo space volume: 214.3 m<sup>3</sup> Temperature: 20.2 degrees

TOPPERFO® T 16/16/10-3  
Acoustic fleece

Mineral wool 30 mm

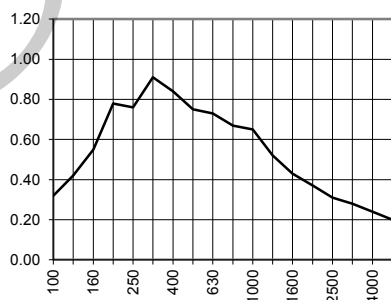
Suspension heights:  
**216/76 mm**  
Cavity 170/30 mm

Acoustical Absorption - Medium values:

Low frequency range (100-315 Hz): 0.62  
 Medium frequency range (400-1250 Hz): 0.69  
 High frequency range (1600-5000 Hz): 0.31

Freq.	[Hz]	Terz
100	0.32	
125	0.42	
160	0.55	
200	0.78	
250	0.76	
315	0.91	
400	0.84	
500	0.75	
630	0.73	
800	0.67	
1000	0.65	
1250	0.52	
1600	0.43	
2000	0.37	
2500	0.31	
3150	0.28	
4000	0.24	
5000	0.20	

Suspension height 216 mm

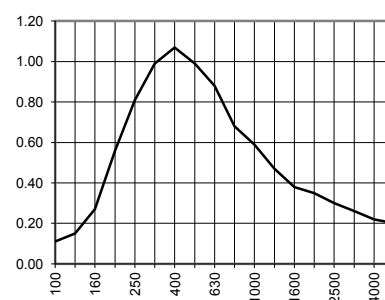
**NRC**  
**0.63**

Acoustical Absorption - Medium values:

Low frequency range (100-315 Hz): 0.48  
 Medium frequency range (400-1250 Hz): 0.78  
 High frequency range (1600-5000 Hz): 0.29

Freq.	[Hz]	Terz
100	0.11	
125	0.15	
160	0.27	
200	0.56	
250	0.81	
315	0.99	
400	1.07	
500	0.99	
630	0.88	
800	0.68	
1000	0.59	
1250	0.47	
1600	0.38	
2000	0.35	
2500	0.30	
3150	0.26	
4000	0.22	
5000	0.20	

Suspension height 76 mm

**NRC**  
**0.69**