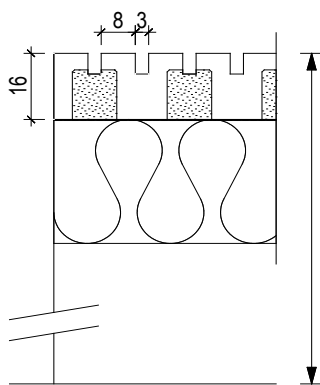
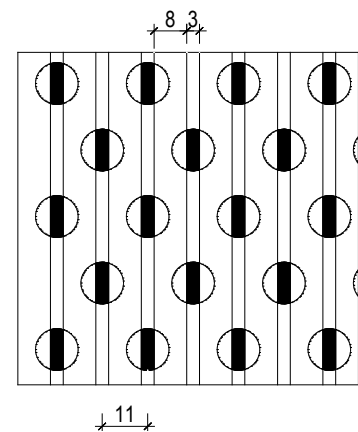


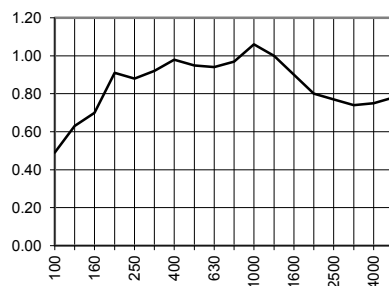
Acoustical Absorption Coefficient according to ISO 354

Object: TOPAKUSTIK® wall- and ceiling panelling
Type TOPAKUSTIK® 8/3 M 9.5%Research: Laboratory: ITA, Germany 22.01.2014
Test area: 12 m² Relative atmospheric humidity: 46%
Echo space volume: 217.5 m³ Temperature: 20 degreesTOPAKUSTIK® 8/3 M
Acoustic fleece SP 60Mineral wool Flumroc type 3
30 mm - 60 kg/m³**Suspension heights: 200/56 mm**
Cavity 154/10 mm

Acoustical Absorption - Medium values

Low frequency range: (100-315 Hz): 0.76
Medium frequency range: (400-1250 Hz): 0.98
High frequency range: (1600-5000 Hz): 0.79

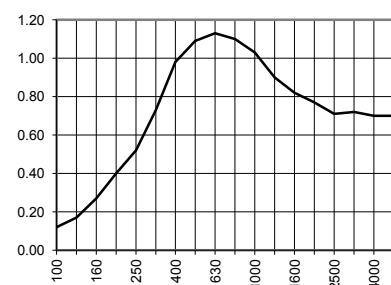
| Freq. | [Hz] | Terz |
|-------|------|------|
| 100 | 0.49 | |
| 125 | 0.63 | |
| 160 | 0.70 | |
| 200 | 0.91 | |
| 250 | 0.88 | |
| 315 | 0.92 | |
| 400 | 0.98 | |
| 500 | 0.95 | |
| 630 | 0.94 | |
| 800 | 0.97 | |
| 1000 | 1.06 | |
| 1250 | 1.00 | |
| 1600 | 0.90 | |
| 2000 | 0.80 | |
| 2500 | 0.77 | |
| 3150 | 0.74 | |
| 4000 | 0.75 | |
| 5000 | 0.78 | |

Suspension heights 200 mm**EN B**
a_w 0.85 (L)
NRC 0.90

Acoustical Absorption - Medium values

Low frequency range: (100-315 Hz): 0.37
Medium frequency range: (400-1250 Hz): 1.04
High frequency range: (1600-5000 Hz): 0.74

| Freq. | [Hz] | Terz |
|-------|------|------|
| 100 | 0.12 | |
| 125 | 0.17 | |
| 160 | 0.27 | |
| 200 | 0.40 | |
| 250 | 0.52 | |
| 315 | 0.73 | |
| 400 | 0.98 | |
| 500 | 1.09 | |
| 630 | 1.13 | |
| 800 | 1.10 | |
| 1000 | 1.03 | |
| 1250 | 0.90 | |
| 1600 | 0.82 | |
| 2000 | 0.77 | |
| 2500 | 0.71 | |
| 3150 | 0.72 | |
| 4000 | 0.70 | |
| 5000 | 0.70 | |

Suspension heights 56 mm**EN B**
a_w 0.80 (M)
NRC 0.85