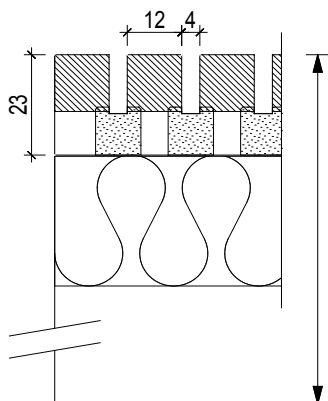
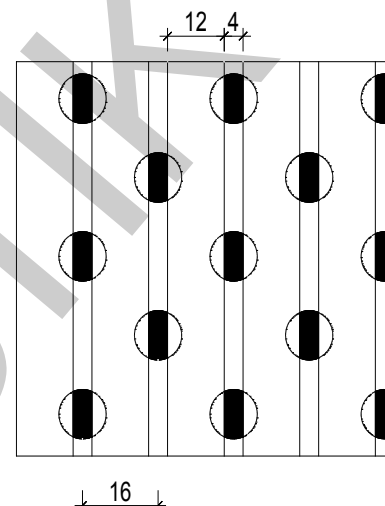


Acoustical Absorption Coefficient according to ISO 354

Object: TOPAKUSTIK® wall- and ceiling panelling
Type TOPAKUSTIK® **Aria 12/4 M** **7.5%**Research: Laboratory: SWISSCOM
Test area: 12 m²
Echo space volume: 214.3 m³09.12.2008
Relative atmospheric humidity: 36.5 %
Temperature: 22.7 degreesTOPAKUSTIK® Aria 12/4 M
Acoustic fleece

Mineral wool 30 mm

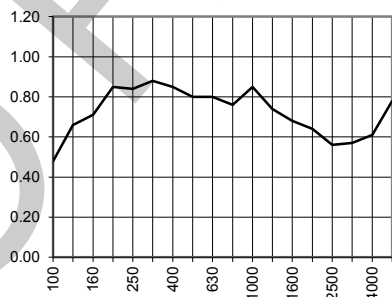
Suspension heights:
223/83 mm
Cavity 170/30 mm

Acoustical Absorption - Medium values

Low frequency range: (100-315 Hz): 0.74
Medium frequency range: (400-1250 Hz): 0.80
High frequency range: (1600-5000 Hz): 0.64

Freq.

[Hz]	Terz
100	0.48
125	0.66
160	0.71
200	0.85
250	0.84
315	0.88
400	0.85
500	0.80
630	0.80
800	0.76
1000	0.85
1250	0.74
1600	0.68
2000	0.64
2500	0.56
3150	0.57
4000	0.61
5000	0.78

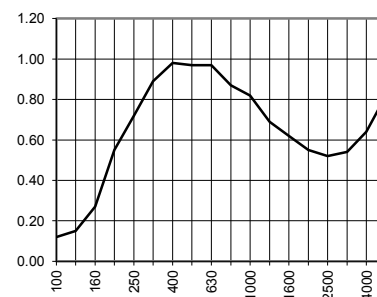
Suspension height 223 mm**EN** **alpha_w** **NRC**
C **0.75(L)** **0.78**

Acoustical Absorption - Medium values

Low frequency range: (100-315 Hz): 0.45
Medium frequency range: (400-1250 Hz): 0.88
High frequency range: (1600-5000 Hz): 0.62

Freq.

[Hz]	Terz
100	0.12
125	0.15
160	0.27
200	0.55
250	0.72
315	0.89
400	0.98
500	0.97
630	0.97
800	0.87
1000	0.82
1250	0.69
1600	0.62
2000	0.55
2500	0.52
3150	0.54
4000	0.64
5000	0.82

Suspension height 83 mm**EN** **alpha_w** **NRC**
C **0.65(LM)** **0.77**