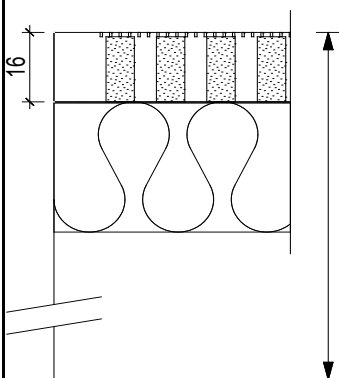


Acoustical Absorption Coefficient according to ISO 354

Object: TOPPERFO® wall- and ceiling panelling  
 Type TOPPERFO® **Micro 2/2/0,5**



Research: Laboratory: SWISSCOM AG 14.12.2010  
 Test area: 12 m<sup>2</sup> Relative atmospheric humidity: 32.1 % rel.  
 Echo space volume: 214.3 m<sup>3</sup> Temperature: 22.8 °C

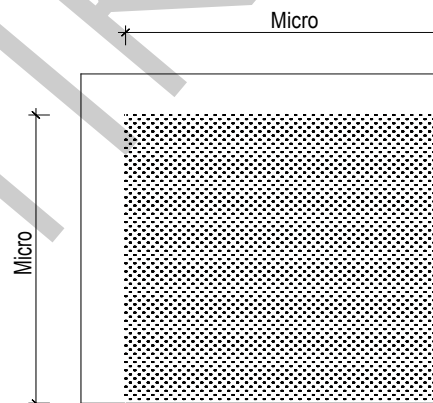


Micro 2/2/0.5

Acoustic fleece

Mineral wool 40 mm,  
 60 kg / m<sup>3</sup>

**Suspension height: 226/86 mm**  
 Cavity 170/30 mm



Acoustical Absorption - Medium values

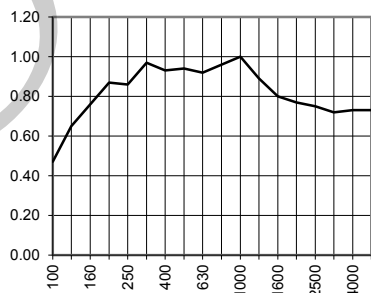
Low frequency range: (100-315 Hz): 0.76  
 Medium frequency range: (400-1250 Hz): 0.94  
 High frequency range: (1600-5000 Hz): 0.75

Acoustical Absorption - Medium values

Low frequency range: (100-315 Hz): 0.53  
 Medium frequency range: (400-1250 Hz): 0.98  
 High frequency range: (1600-5000 Hz): 0.65

Freq. [Hz]	Terz
100	0.47
125	0.65
160	0.76
200	0.87
250	0.86
315	0.97
400	0.93
500	0.94
630	0.92
800	0.96
1000	1.00
1250	0.89
1600	0.80
2000	0.77
2500	0.75
3150	0.73
4000	0.72
5000	0.73

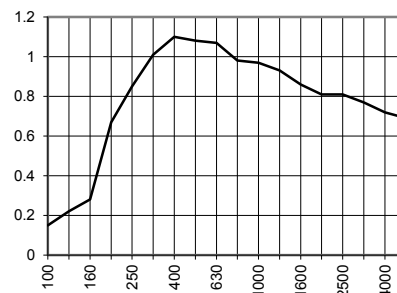
**Suspension height 226 mm**



NRC 0.89

Freq. [Hz]	Terz
100	0.13
125	0.17
160	0.32
200	0.68
250	0.84
315	1.04
400	1.07
500	1.04
630	1.06
800	0.97
1000	0.92
1250	0.83
1600	0.78
2000	0.73
2500	0.66
3150	0.59
4000	0.58
5000	0.57

**Suspension height 86 mm**



NRC 0.88