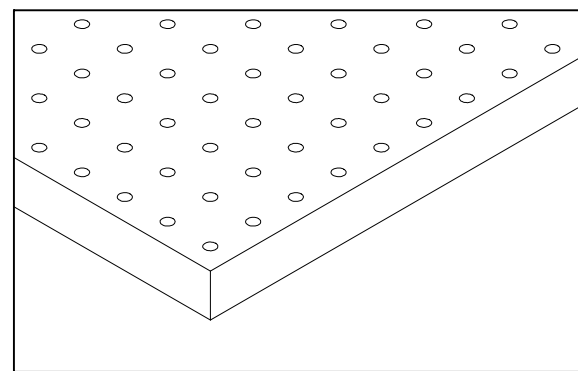
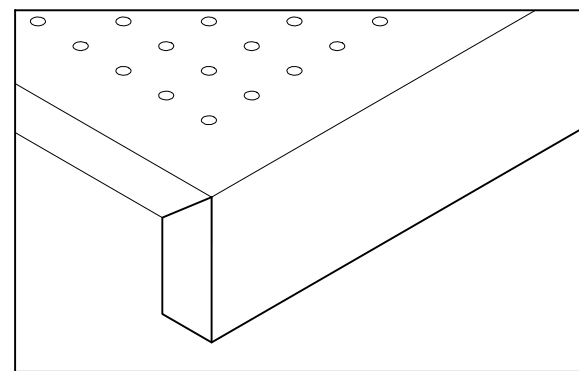


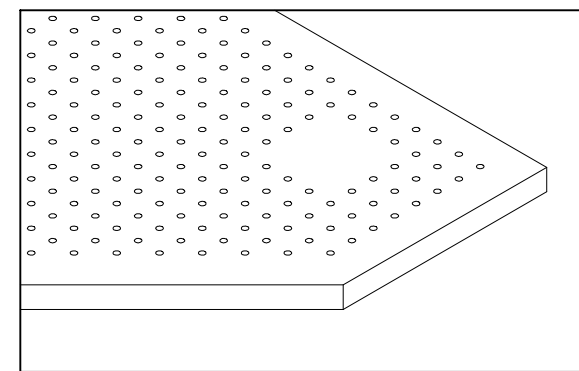
EDGE BANDED
WITH CLEAR UNPERFORATED
BORDERS - AS SPECIFIED




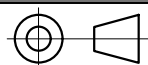
EDGE BANDED
WITH PERFORATIONS RUNNING
AS CLOSE TO PERIMETER AS
POSSIBLE

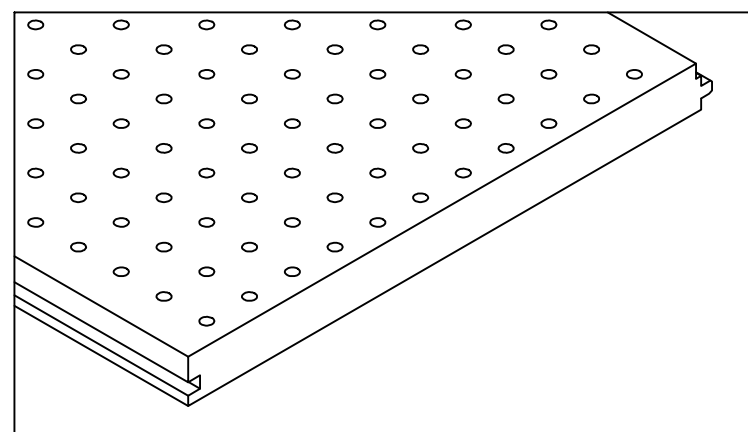
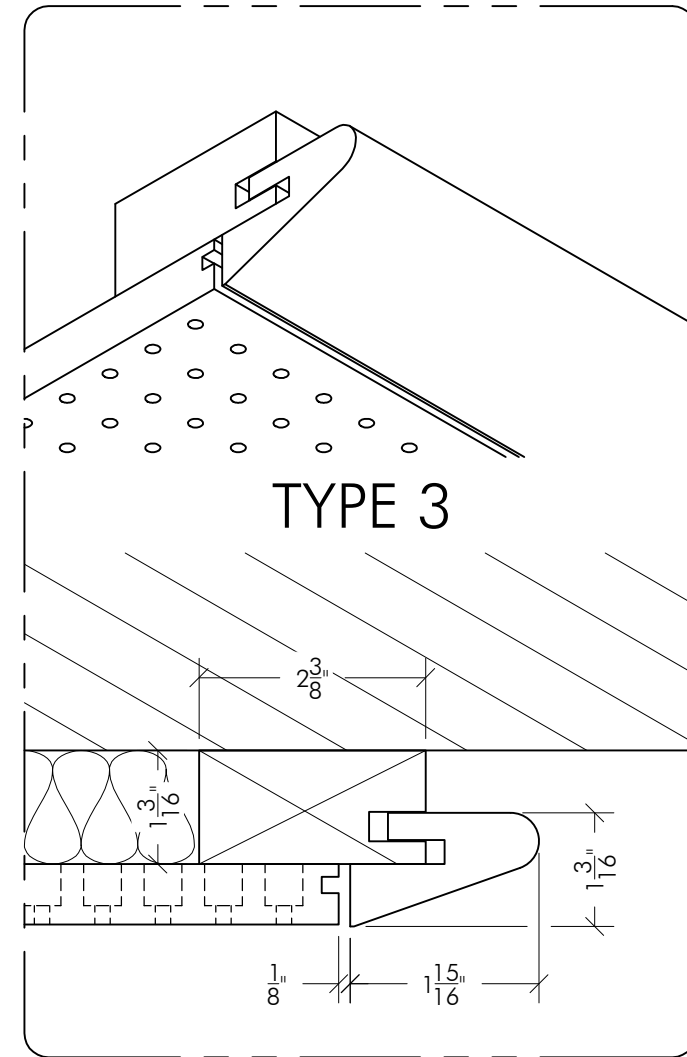
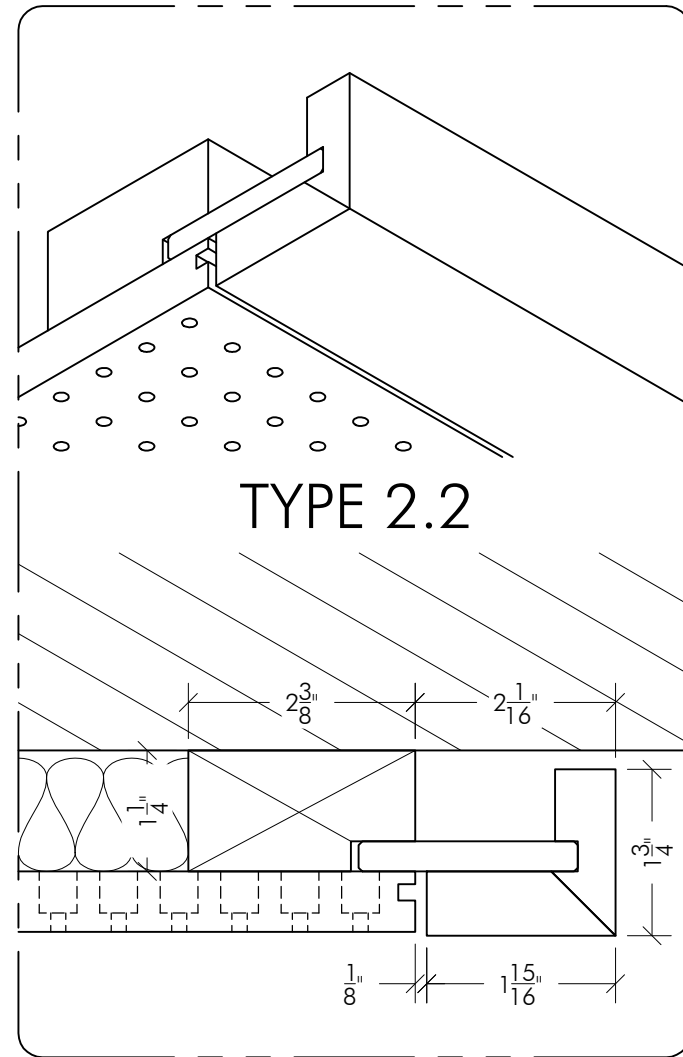
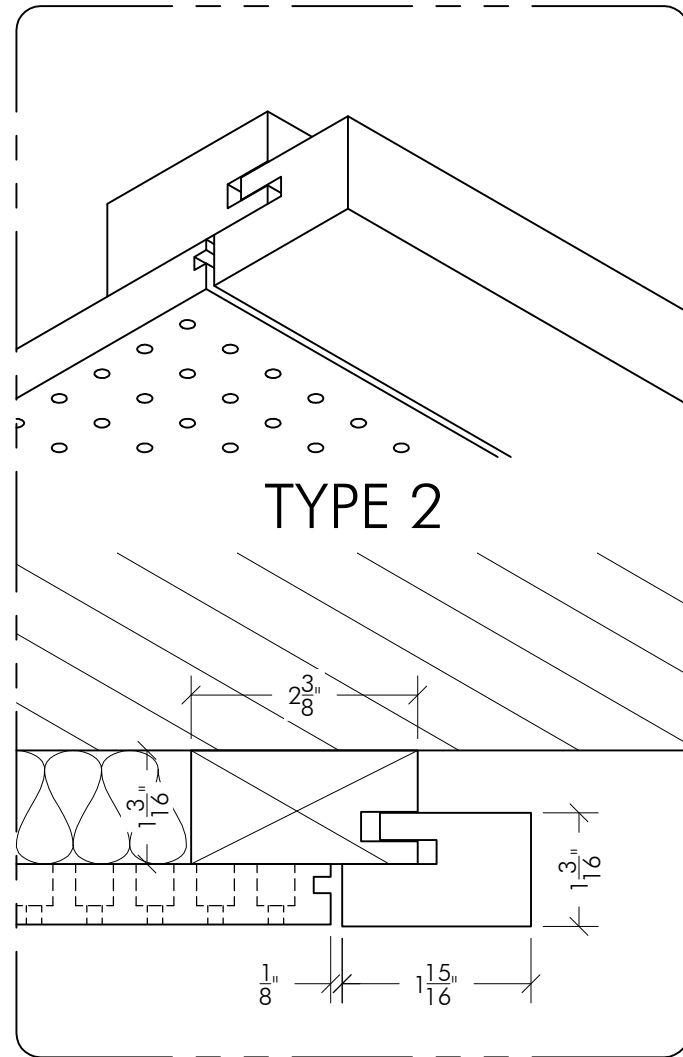
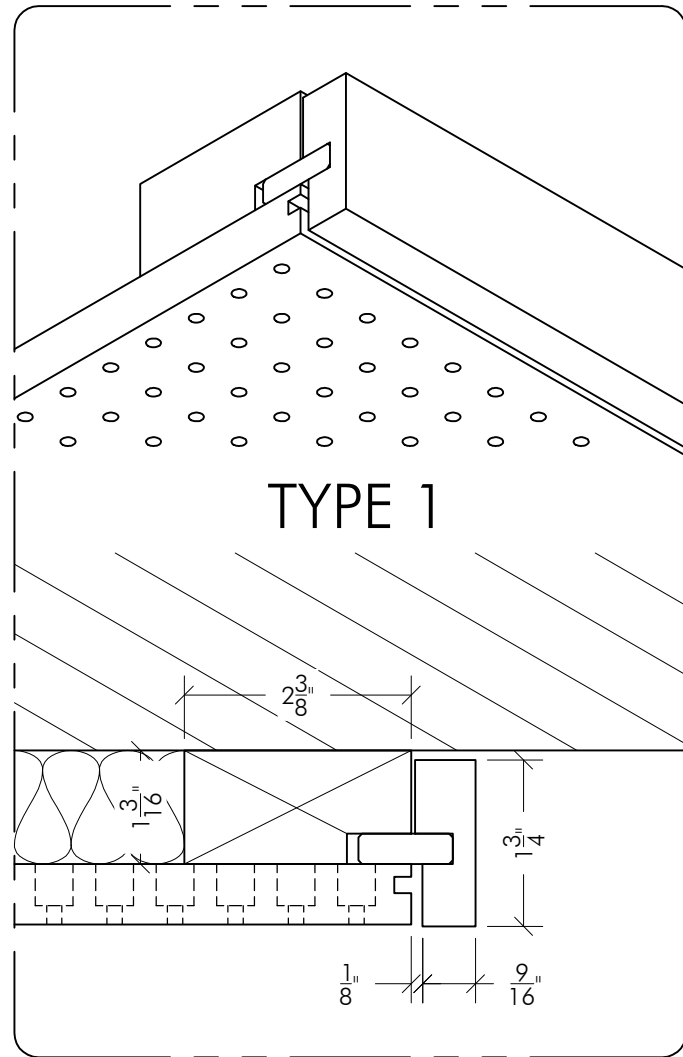


MITERED RETURN
FACTORY ATTACHED UP TO 6"

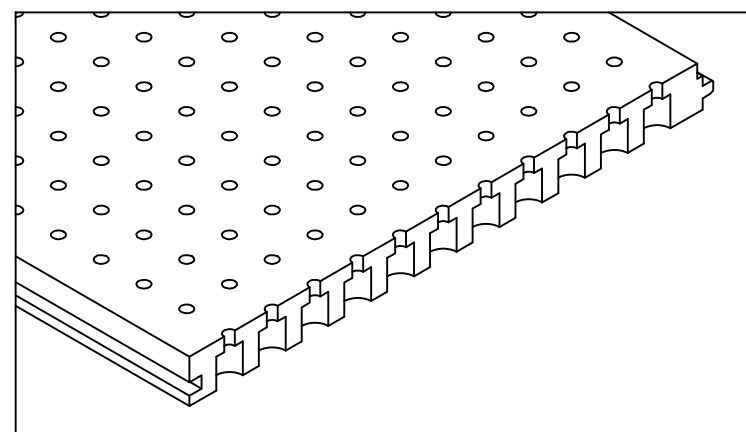


CUSTOM SHAPES OR
PERFORATION HOLD BACK

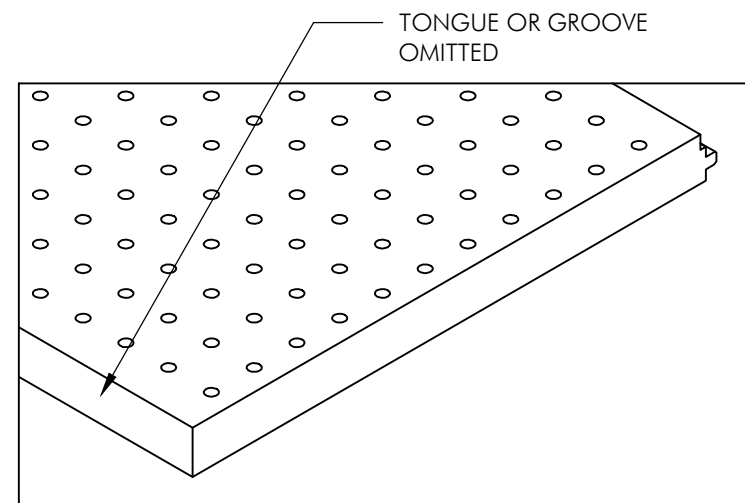
PRODUCT: TOPPERFO PANELS		TOP(A)K(U)S(T)I(K) 	
SHEET TITLE: PERIMETER OPTIONS		PRODUCTION TOLERANCE: 0" - 36" ±1/32", ±1/32" PER 36" OF PRODUCT	
SCALE: NTS	PAGE NO: 1/3	3 rd ANG. PROJ. 	DRAWN BY: WRM
			REV NO: 0 REV DATE: 05/18/2015



PLAIN CUT (AT 16mm INCREMENTS)



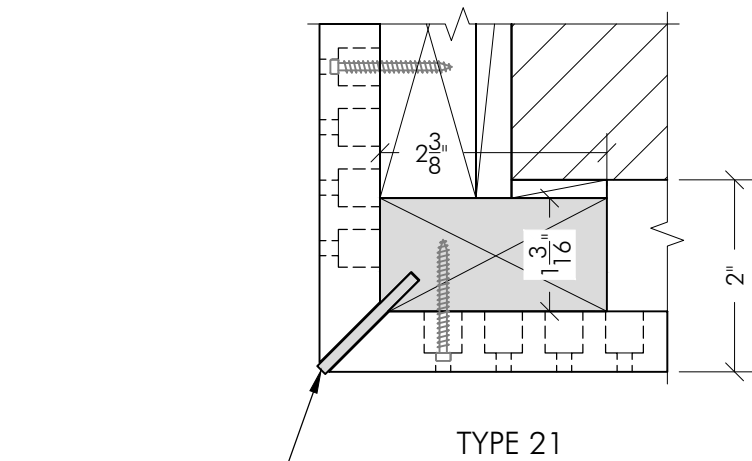
PLAIN CUT (THROUGH PERFORATIONS)



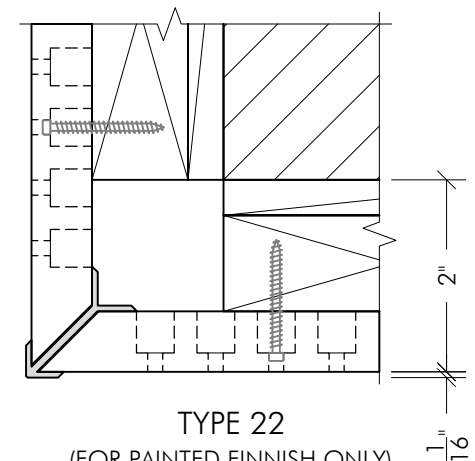
FINISHED LONGITUDINAL EDGE*

*AVAILABLE UPON REQUEST

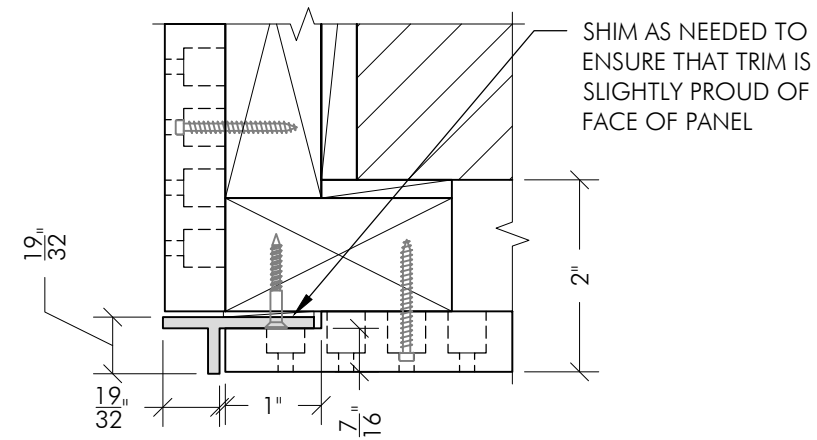
PRODUCT: TOPPERFO PLANKS			TOP(A)K(U)S(T)I(K)	
SHEET TITLE: PERIMETER OPTIONS			PRODUCTION TOLERANCE: 0" - 36" ±1/32", ±1/32" PER 36" OF PRODUCT	
SCALE: NTS	PAGE NO: 2/3	3 rd ANG. PROJ	DRAWN BY: WRM	REV NO: 0
			REV DATE: 05/18/2015	



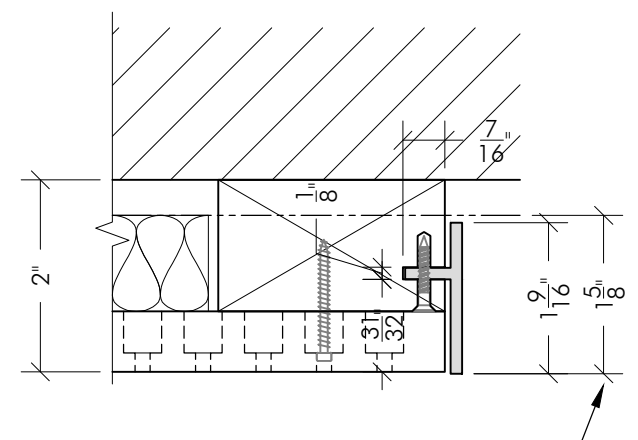
TYPE 21



TYPE 22
(FOR PAINTED FINISH ONLY)

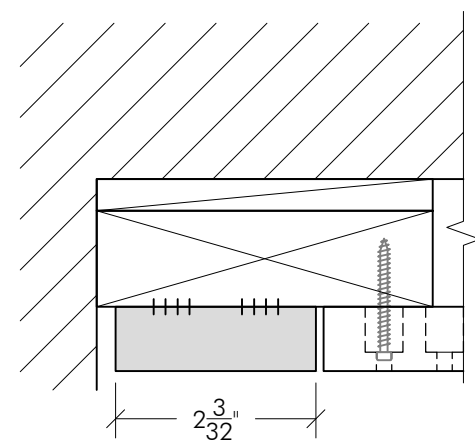
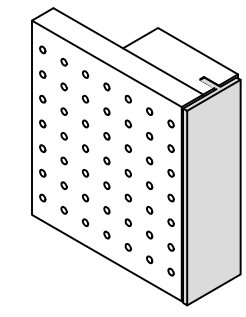
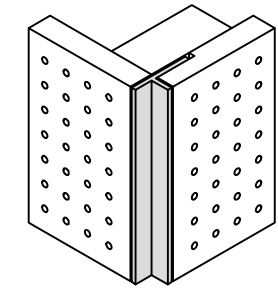
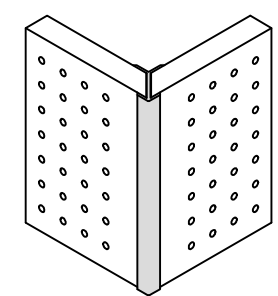
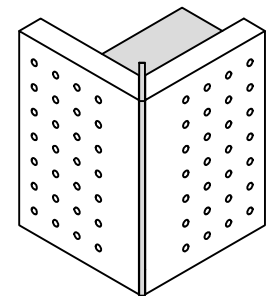


TYPE 23 CORNER

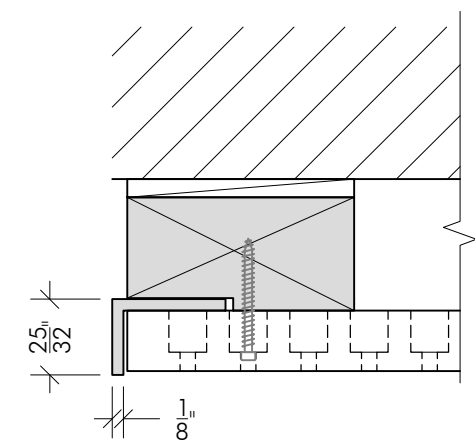
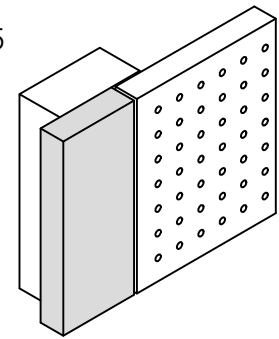


TYPE 23 END

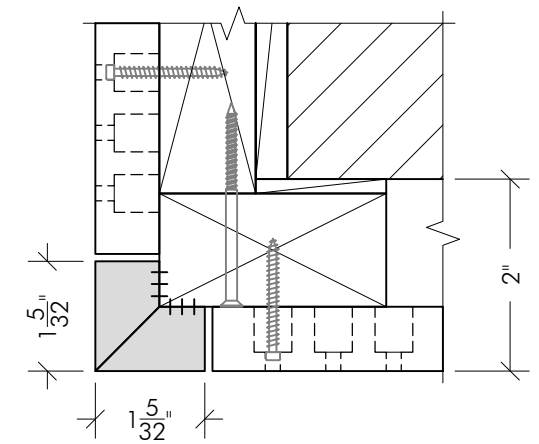
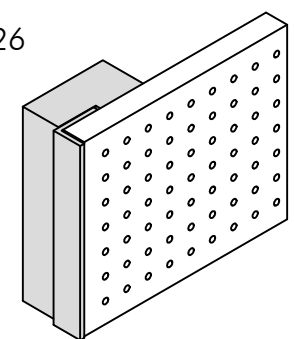
ALUM. FLAT BAR
1/8" x 1-3/8"



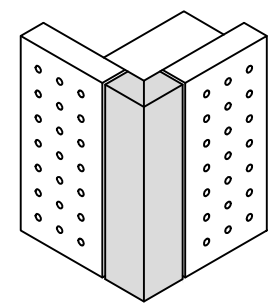
TYPE 25



TYPE 26



TYPE 27



NOTE FOR PLANKS:
CUT MITERS AND RABBETS ONSITE

APPROPRIATE RECEIVING BLOCKING WILL BE PROVIDED FOR TRIMS THAT REQUIRE IT (21,24,26). BLOCKING DIMENSIONS ARE 2-3/8" x 1-3/16" (60x30mm) TYP.

PRODUCT: TOPPERFO PLANKS/PANELS			TOP(A)K(U)S(T)I(K)	
SHEET TITLE: CORNER OPTIONS			PRODUCTION TOLERANCE: 0" - 36" ±1/32", ±1/32" PER 36" OF PRODUCT	
SCALE: 6"=1'-0"	PAGE NO: 3/3	3 rd ANG. PROJ.	DRAWN BY: WRM	REV NO: 0
			REV DATE: 05/18/2015	